

19+ RAM 1500 HYBRID XB LED HEADLIGHTS INSTALL GUIDE

WARNING: By reading this document, you agree it is only to be used as an educational guide. Morimoto Lighting nor its dealers make guarantees on any finished results, nor are they to be held responsible for any damage, misuse, or personal injuries. If you are unable to clearly understand and adapt the information below, professional installation is recommended.

PACKAGE CONTENTS



2X HEADLIGHT ASSEMBLIES



1 X FUSE TAP / DRL HARNESS

IMPORTANT: If your vehicle is equipped with anything but OEM turn signals (full assemblies, LED bulbs, or otherwise) in the tail lights or elsewhere: You may experience a hyper flash and/or problem with the sequential signal setting on these headlights. This is not a defect in the headlight, and caused by un-matched impedance with your original vehicle settings.

2019+ RAM 1500

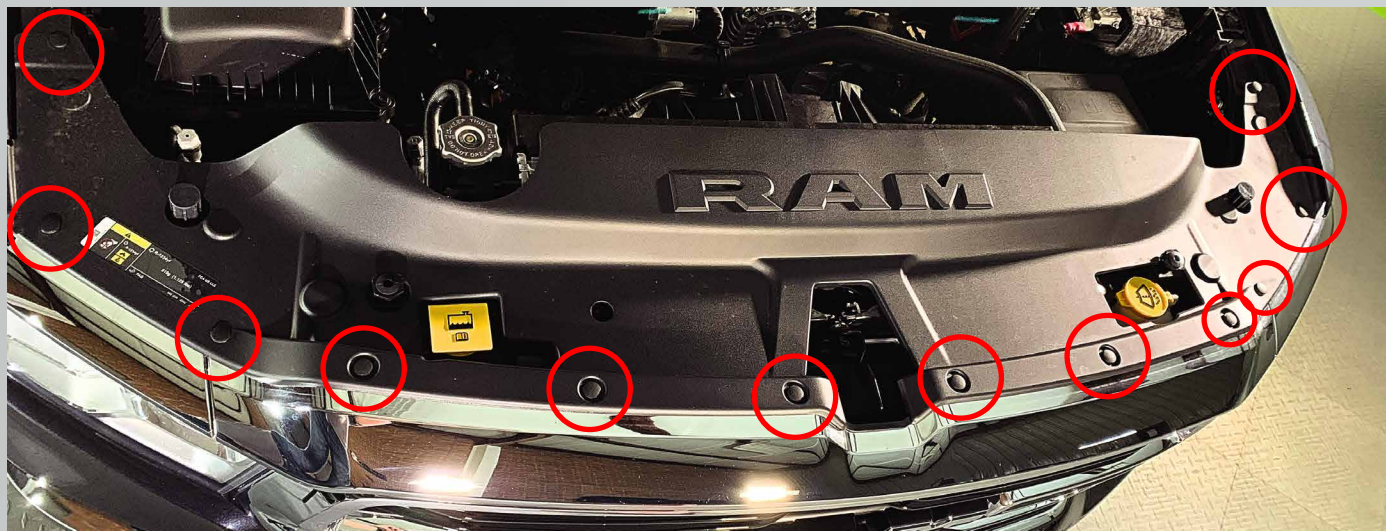


REQUIRED TOOLS

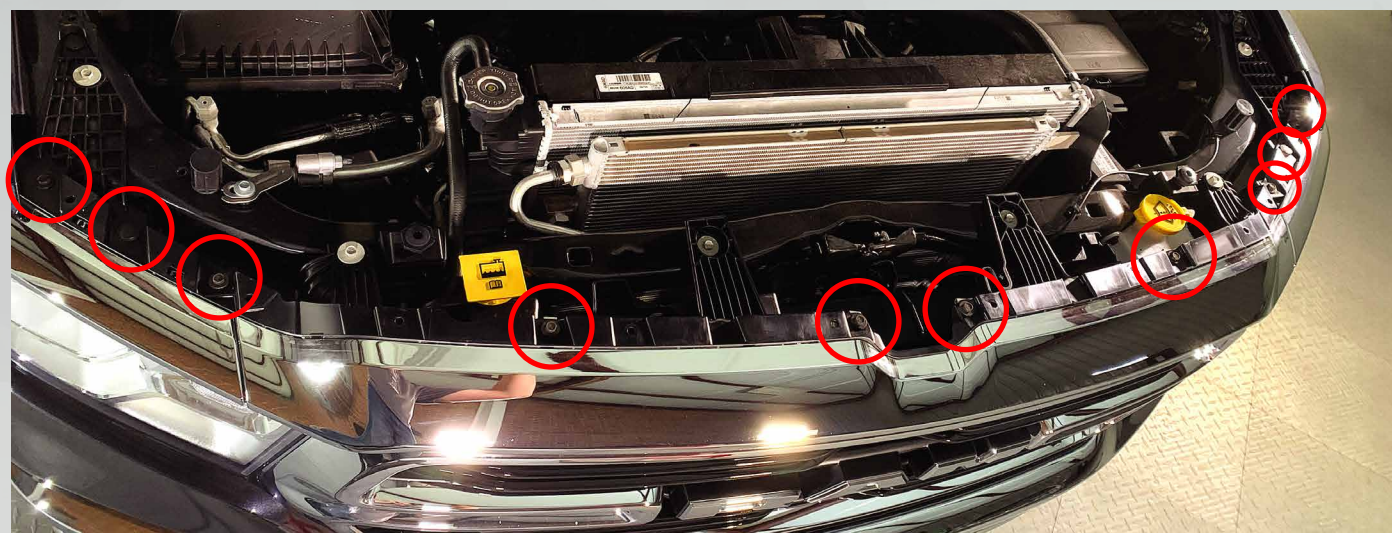
- RATCHET
- 8MM SOCKET
- 10MM SOCKET
- T20 TORX BIT
- T25 TORX BIT
- PICK TOOL
- FLAT HEAD SCREWDRIVER OR TRIM REMOVAL TOOL
- PHILIPS HEAD SCREWDRIVER
- NEEDLE NOSE PLIERS

INSTALLATION PROCESS

1. Remove the twelve (12) plastic clips holding on the grille cover. Remove and set aside the grill cover.



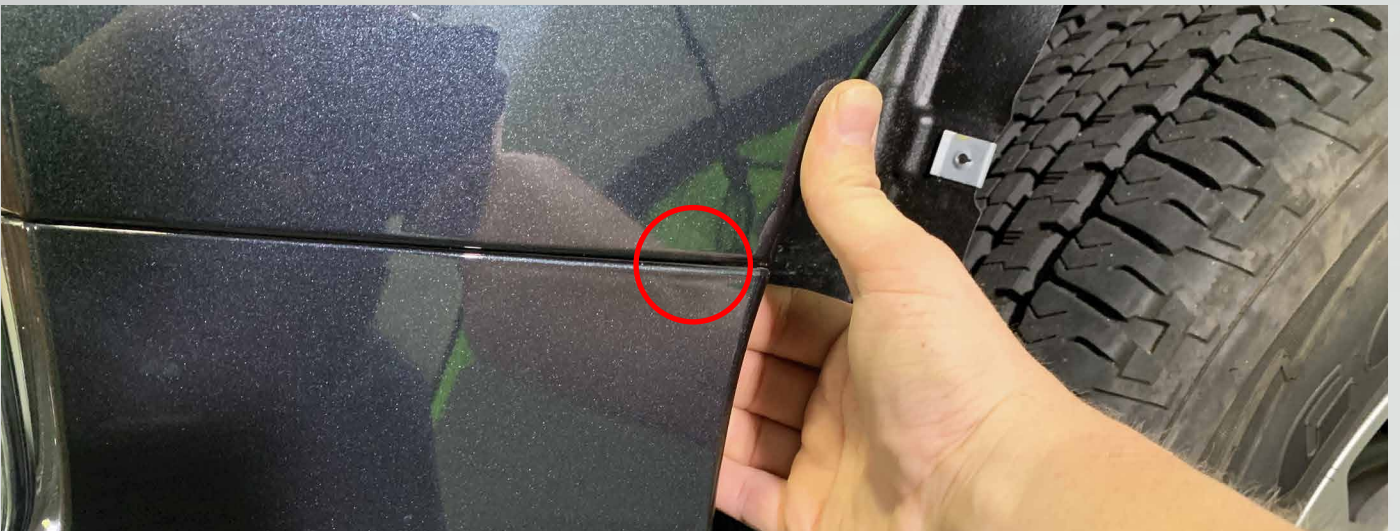
2. Remove the eight (8) 10mm bolts and two (2) plastic clips holding the top grille piece to the truck. Slide the top grill piece forward to remove from the truck.



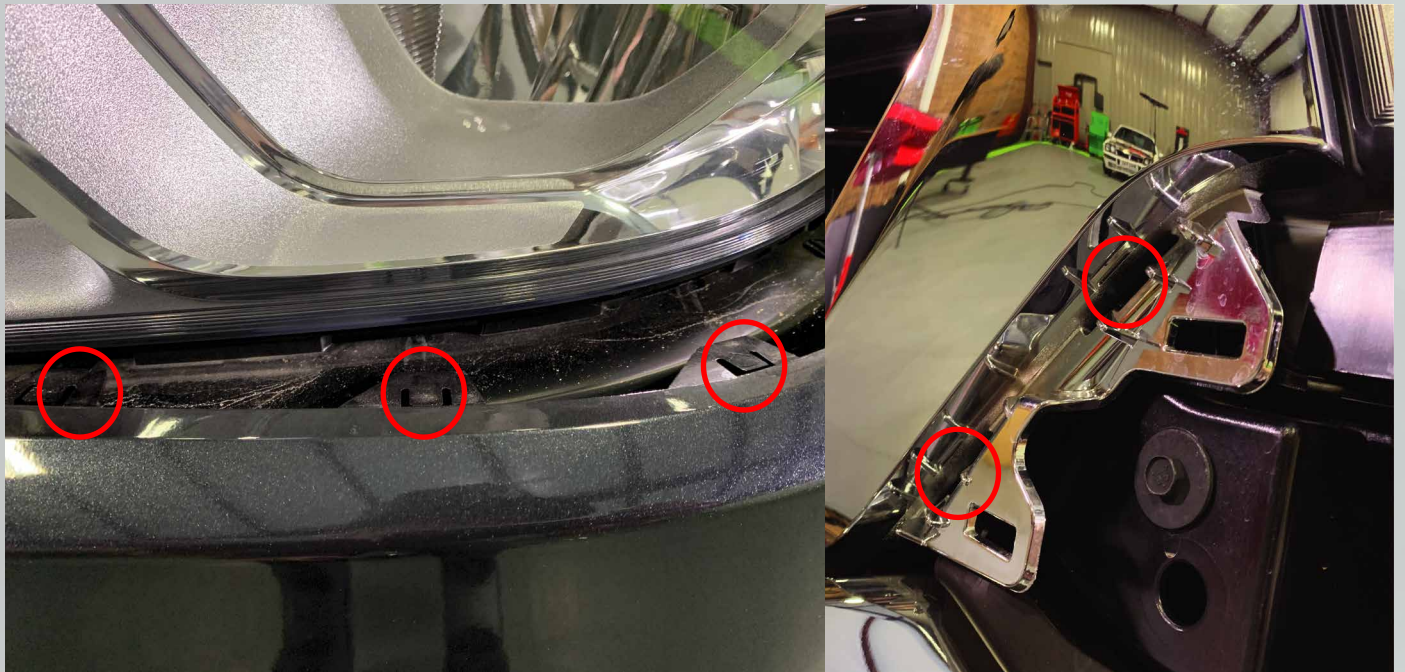
3. Remove the four (4) 8mm bolt the fender liner to the fender. Pull the fender liner down.



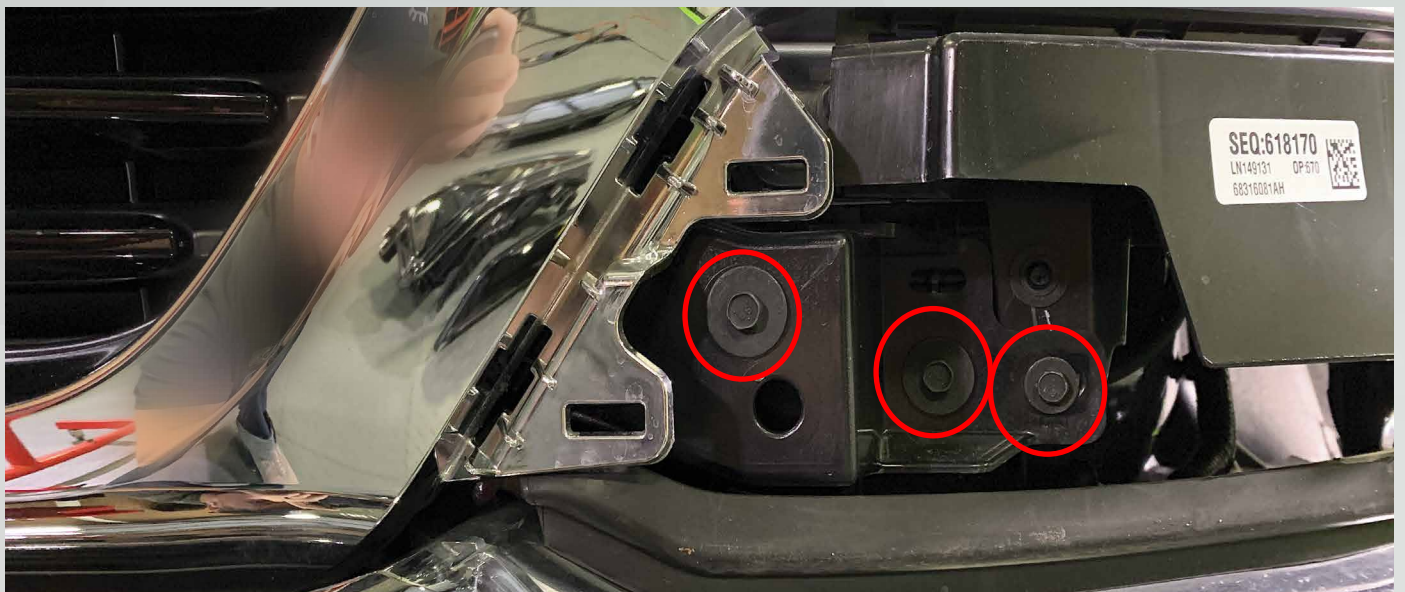
4. Remove one (1) 10mm bolt behind the fender. Then tug the trim piece down and pull out towards yourself.



5. Pull trim piece to release from the bottom of the headlight and the grille.



6. Remove three (3) 10mm bolts on each side of the grille.



7. Remove four (4) 10mm bolts from the top of the grille.



8. Pull up on grille tabs to release grille..



9. Pull the grille off the truck.

10. Remove one (1) 10mm bolt from the side of each headlight.



11. Remove one (1) 10mm bolt and one (1) plastic clip on the top of the headlight.



12. Unplug each headlight by pushing down the tab on the connector and sliding the connector apart.



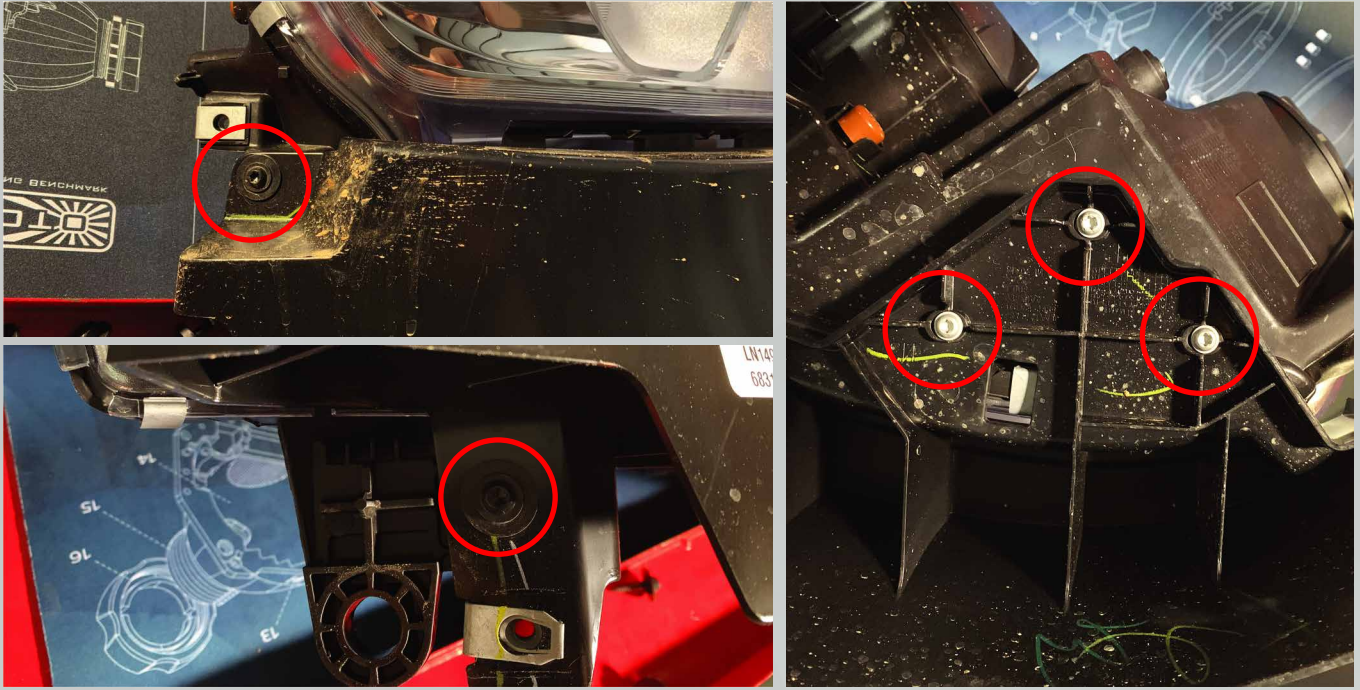
13. Unplug the sidemarker light connector by pressing the tabs and sliding the connectors off on each headlight.



14. Remove the headlight off the truck.

15. Repeat steps #10-14 on the other headlight.

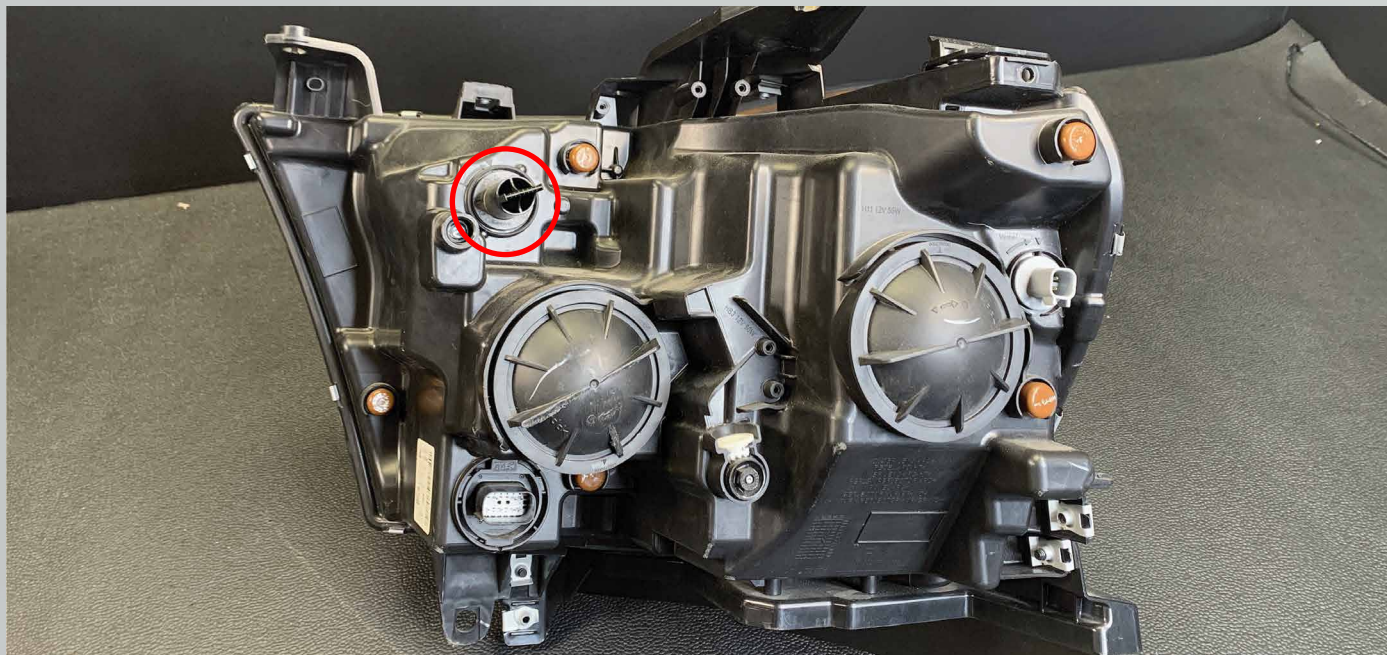
16. Remove five (5) T25 torx bolts from the side and bottom of each headlight. Next remove the bracket on the bottom of each headlight. Now transfer that brackets and bolts over to your XB headlights.



17. Remove the three (3) T20 torx screws, remove the bracket. Transfer the bracket and bolts onto the Morimoto headlight.



18. Remove the factory turn signal bulb by rotating the socket counter clockwise. Pull the socket out and pull the bulb out of the socket.

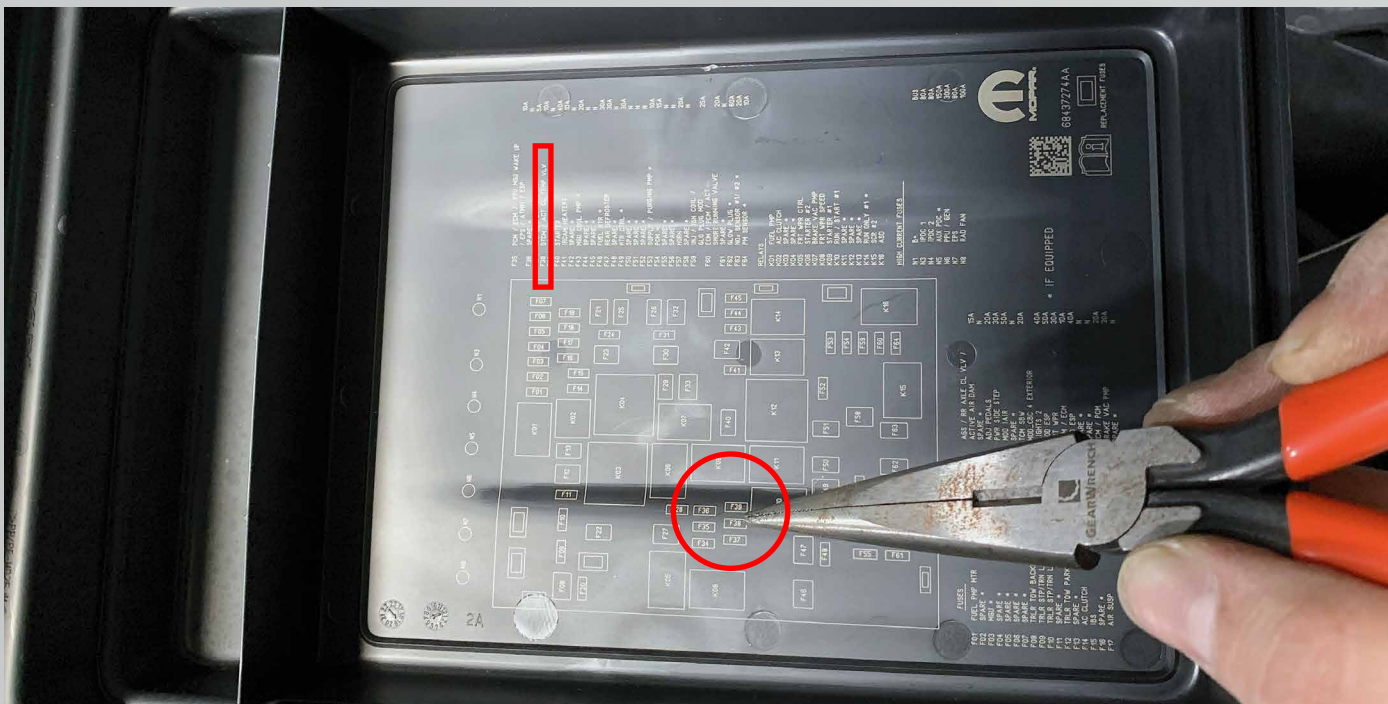


19. Transfer the OEM turn signal bulb into the Morimoto headlight socket.

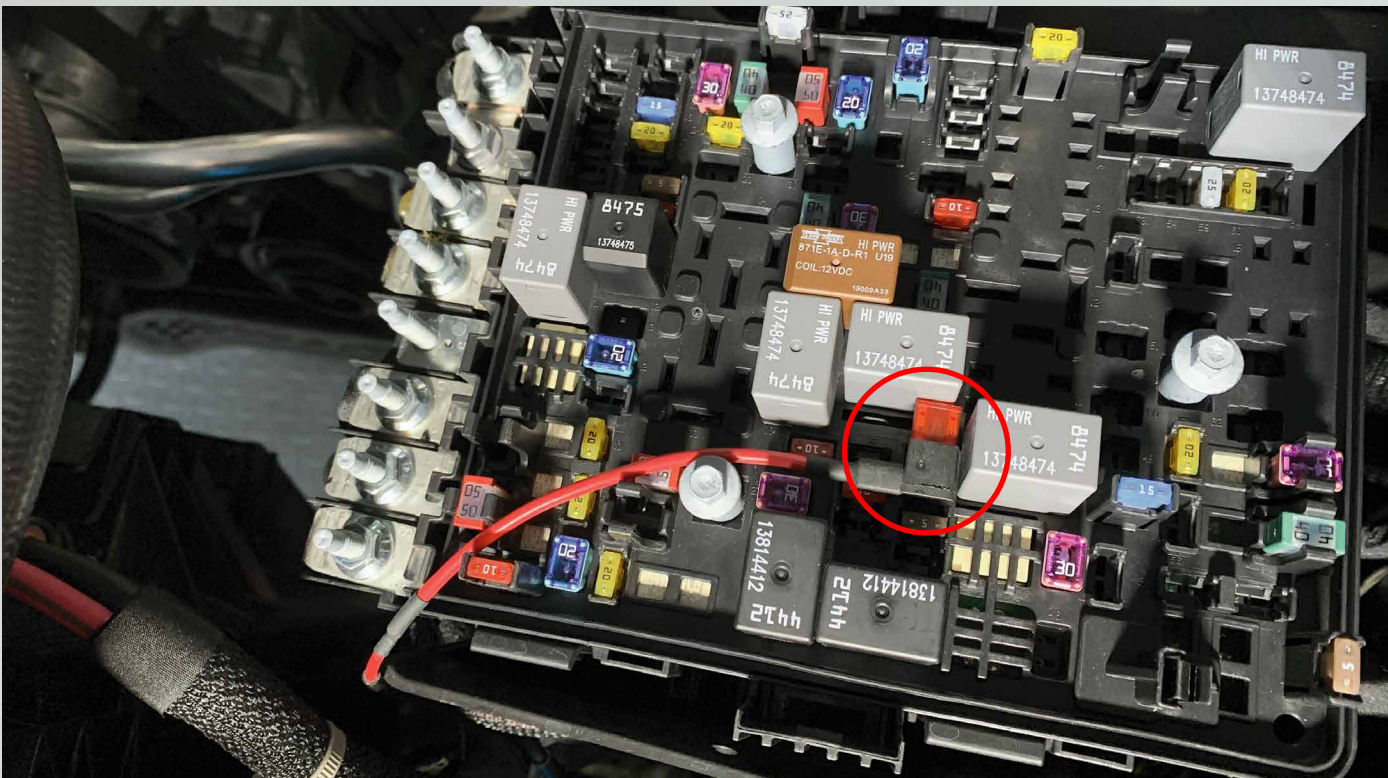


20. Repeat steps #16-19 on the other side.

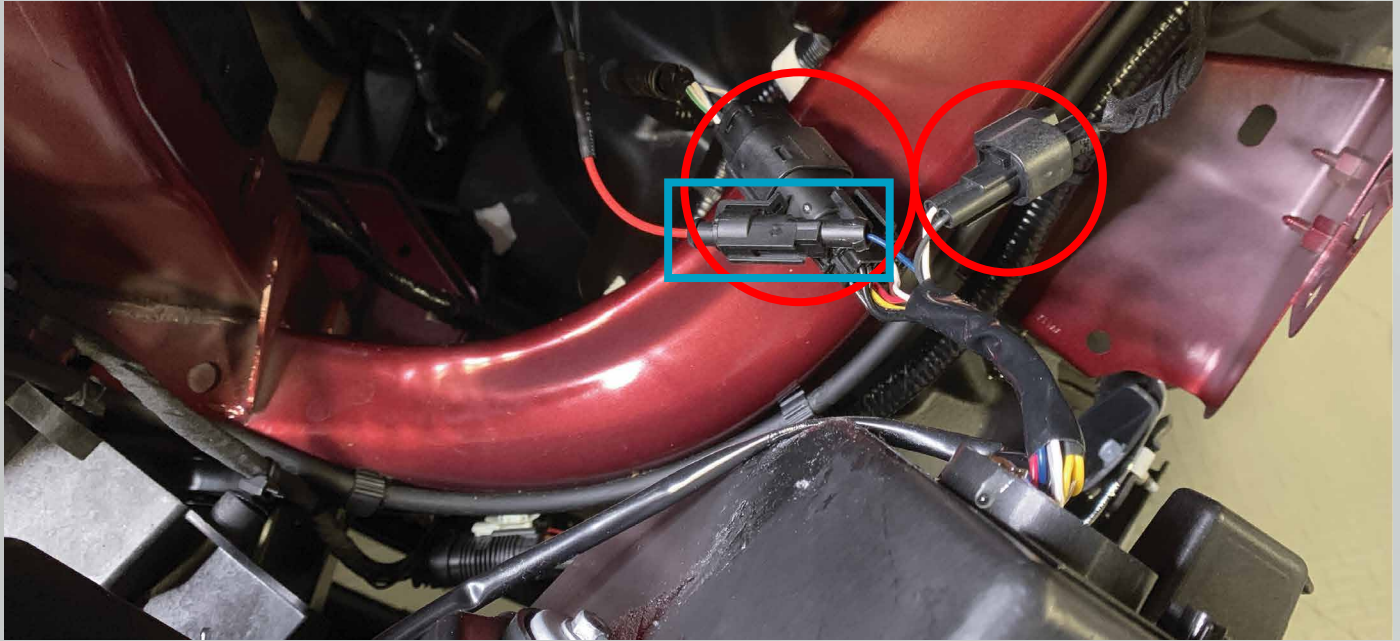
21. Locate the under hood fuse box behind the driver side headlight. Remove fuse F38.



22. Locate the supplied DRL harness. Plug in the DRL harness fuse tap into the fuse box. Next run shorter wire of the harness to the driver side headlight area and the longer wire to the passenger side headlight area.



23. Plug in the wiring connectors from the Hybrid headlight into the factory connectors(RED). Also plug in the DRL harness plug (BLUE).



24. This connection is to switch between solid turn signal and sequential (scrolling) turn signal. If you choose sequential turn signal mode then just leave this connector unplugged. If you choose solid turn signal mode then simply connect the plugs together.



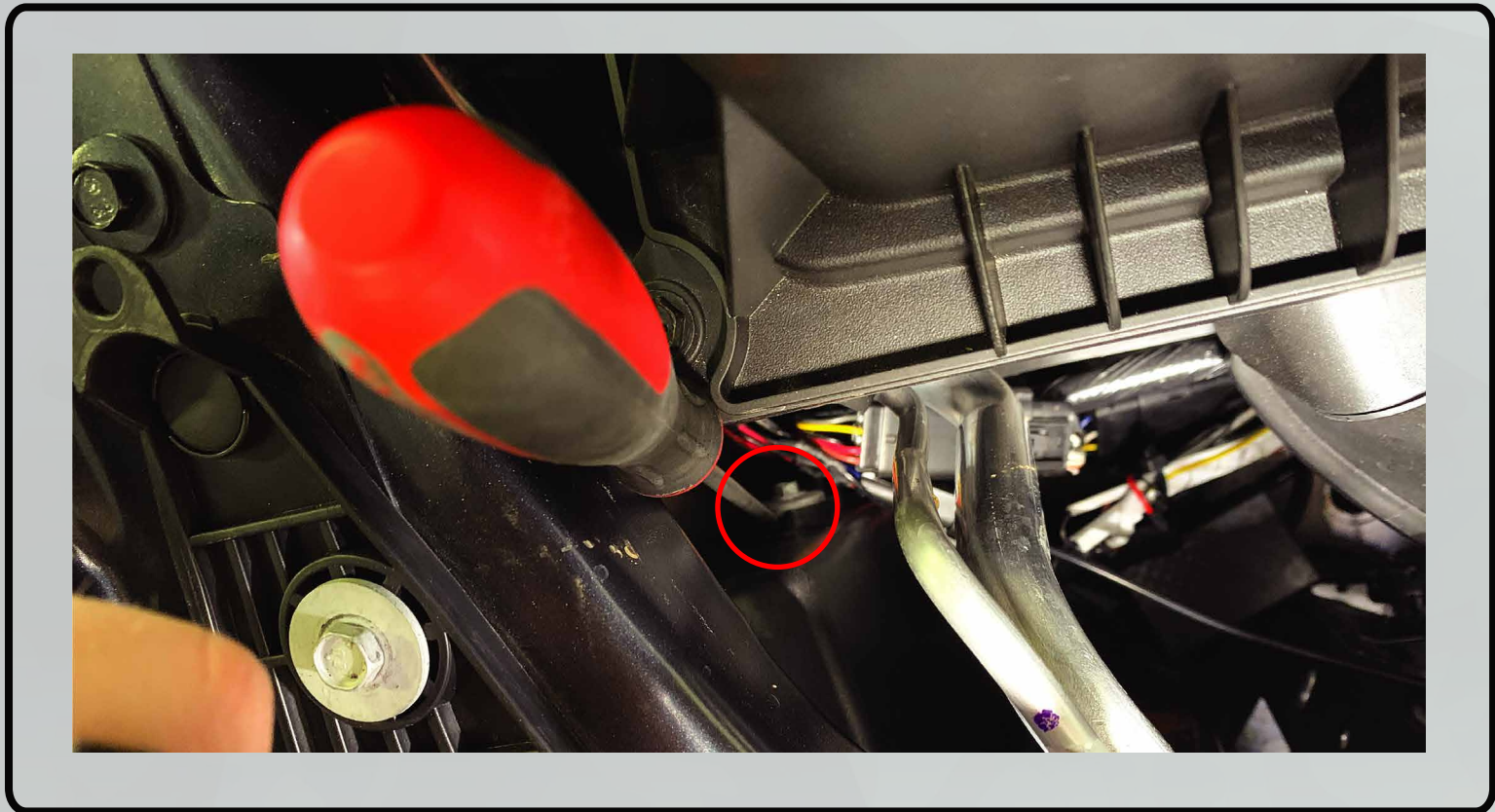
25. Place the headlight in it's place on the truck and thread in the bolts.

26. Repeat step# 23-25 on the other side of the truck.

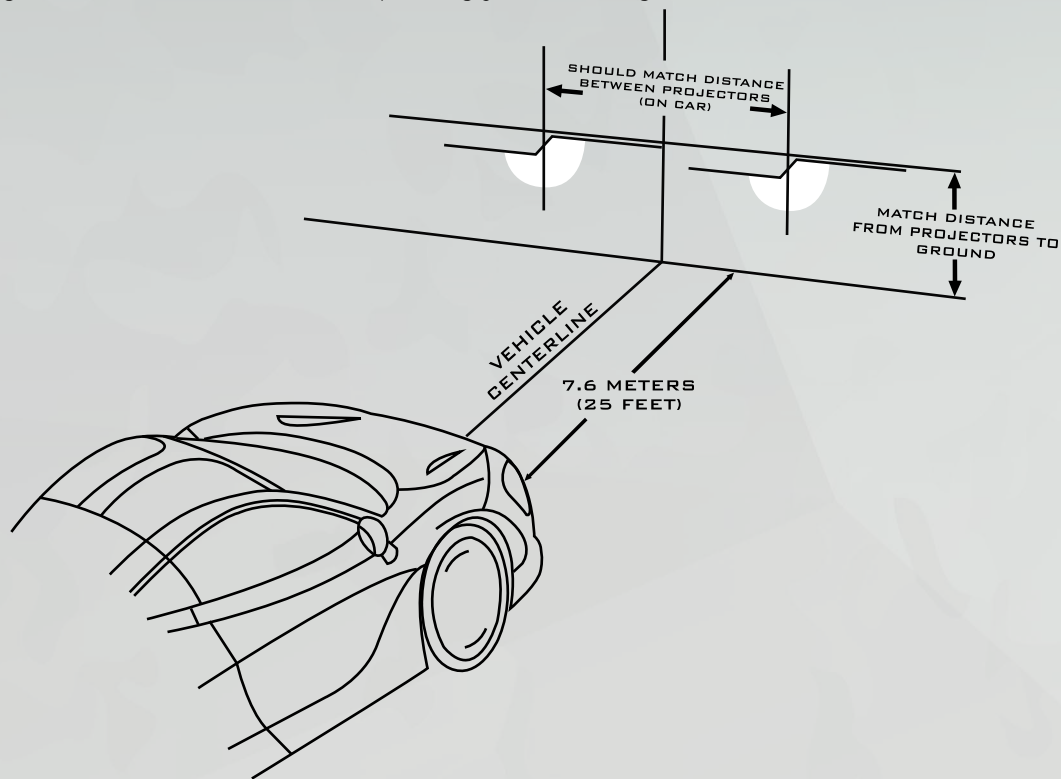
27. Turn the truck on and test all of the functions to make sure everything works.

28. Reassemble the truck in the reverse order that you took it apart.

29. Adjust the height of the headlight beam pattern by rotating this bolt with a philips screwdriver.



Refer to the aiming standards below when adjusting your headlights.



ENJOY YOUR NEW XB HEADLIGHTS!

-END-